

MISSION TO AMISH PEOPLE

P.O. Box 128 • Savannah, Ohio 44874 • (419) 962-1515 • WWW.MapMinistry.org • JKeim@MapMinistry.org

Dear Friend,

January 2004

We would like to update **you** about some of the happenings from our last newsletter as well as share some of the high lights of 2003. We hope that **your** time during the holidays was relaxing and fun with family and friends. As for our family, we couldn't have asked for anything better. God is so good to us and we just feel so blessed.

Thank You

We would like to thank those of **you** who shared extra financial gifts with us personally as well as the ministry during Christmas. It is not really possible to express to **you** how much encouragement and appreciation **you** brought to our hearts. To all of **you** who shared **your** earnings and prayed for us and the ministry during 2003...**THANK YOU** from the bottom of our hearts! It has been a double blessing to see some of the former Amish that we have served and ministered to also help in the area of finances. Isn't that what it is all about?! People reaching people for the Lord Jesus.

MAP Treasurer



At this time we would like to brag a little on the MAP treasurer. Sam Gray does such an outstanding job. He is organized (we like that!), faithful, trustworthy, and everything he does is always very professional. In just a few days you should be getting your financial statement for 2003 in the mail from Sam. If for some reason you would not get one by the end of January please let me or Sam know. Sam's email address is SGray@Bethelchapel.com.

Sonlight Club

(Correspondence Bible Lessons)



- 1. You helped send out (12,977)** Bible lessons to Amish children and adults in 2003
- 2. Our students live in** Colorado, Florida, Honduras, Illinois, Indiana, Iowa, Kansas, Kentucky, Maryland, Michigan, Minnesota, Missouri, Montana, New York, N. Carolina, Ohio, Oklahoma, Pennsylvania, S. Carolina, S. Dakota, St Georges West Indies, Tennessee, Washington, and Wisconsin.
- 3. During 2003 (1,548)** new students enrolled which gives us a total of (2,156) students.

We would like to thank the 12 people that helped us get first time lessons out—*what would we do without them!?* A big thank **you** to all the Sunday school classes, VBS's, friends, and churches who helped provide postage stamps. May your hearts be blessed to know that very seldom does a week go by that we do not hear from somebody that they asked Jesus to become their Savior.

Donation Center

(clothing, furniture and household items)- even used cars? Just a thought.



UPDATE...During October and November we were in search for a place where we could bring all the donated items together into one place. We had three options to choose from. After some serious praying and several board meetings we finally concluded that renting part of the old elementary school would be the best route to go. The building is located about 1/2 mile from our church (MAP Office) which makes it more convenient. There is no heat or water in that part of the building but there is electricity. About 20 people helped us clean up, fix up and move all the items into the school classrooms. The cost to rent one class room is \$50 a month. At this point we had no choice but to over flow into two class rooms because of the many donations we have received from kind people like you. **REMINDER...***We do give a tax receipt at your request for any donations you make to the Donation Center.*



Adopt-A-Person Ministry

This year (5) Amish and former Amish families/individuals were adopted by folks like you. To those of you who wrote cards, send gifts, invited them to your home for a meal, and just called them to say hi...**THANK YOU!** To those of you who adopted someone and it just sort of didn't go anywhere...**thank you** for trying and please do not feel guilty. It seems for some adoptees this ministry has been a real strength and for others it was not.

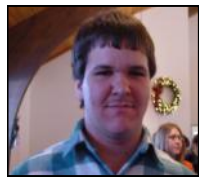
Evangelistic Mailing



We have made a decision to go ahead and put the first edition of the evangelistic mailing together and then wait for the financial part to come through. Thanks to the 11 people who helped us enter 18,662 Amish family addresses during the year. Some of **you** are still hard at work and we appreciate **you** so much. Please pray with us as we wait on the person or persons to come through with the \$5,000 to do the first printing.

Updates and Recent Ministry Opportunities

Please consider making these young people a part of your prayer life



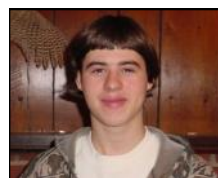
Chris
Swartzentruber



Sam
Miller



Moses
Schrock



Perry
Keim



Ben
Weaver

1. Chris has been a big encouragement to us. He is not saved yet but we have been talking to him. He has not missed one Sunday in coming to church since he started 6 weeks ago. He comes to the Sunday night Bible studies as well.
2. Sam is from Kentucky but has been to Ashland a number of times and has gone to church with us. We have been sharing the gospel with him. We helped him with his drivers license as well as just being a friend and support.
3. Moses lives in Pennsylvania but is originally from this area. He knows the Lord as his Savior and is involved in a Mennonite church in his area. At this time he is seeking the Lord's direction in maybe moving back to Ohio for the very purpose of reaching his family for Christ.
4. Perry joined the home church last month. He has been through a lot of ups and downs it seems but we praise God that he has been faithful in coming to church and Tuesday night prayer meetings. Perry is Joe's brother.
5. We have been talking a lot about Ben it seems but here is a young man that we all fell in love with. Ben was doing so well in his faithfulness to church and prayer meetings but this morning he leaves to go back to the Amish. He called us one more time to thank us and say good bye. Our hearts are broken but at the same time we thank God that we were able to influence him for God for a few short month. If you remember, he did give his heart to the Lord two month ago.

Missions Trip to Costa Rica



William is Joe's brother and with out a doubt has been our greatest pillar of emotional support in the MAP Ministry. We love him dearly. On **February 7th** (next month) he is leaving with a missions group to go to Costa Rica for two weeks to do construction work and evangelism. This is something he has been praying about for over a year now. We are just as excited about his missions trip as he is. We would like to encourage you *to consider* helping him get there by giving toward the cost of the trip. The trip is going to cost him \$1520 for his flight and food. If you so desire to help him get there financially you can send your check to...**MAP Ministry—C/o William Keim/Costa Rica Trip—P.O. Box 128—Savannah, OH 44874**. We will make sure he gets it. He requested that we ask you to pray for him as well. *Psssst...* We'll let him tell you how it went for him in the next newsletter.

Working with Amish and Former Amish families

1. (13) People received jobs/drivers license/S.S. cards through the MAP Ministry
2. (6) Salvation decisions, (*not counting the Son Light Club decisions*) (1) baptism
3. Tuesday night is prayer meeting at our house. We are seeing God change lives that seemed so impossible.
4. God chose to use us in several abuse situations. One was from the Amish community close to home. It seems it just doesn't matter where you go there are always people who are being taken advantage of. One of the most difficult things for us has been to know how to deal with marriage abuse. In one case the wife was ready to leave her husband and Amish community with some of her children. We are very much against long time separation of a marriage.
5. It seemed that during 2003 we worked more with the former Amish then what we did with the Amish as far as the personal level goes. We felt guilty about this for a long time but in some sense it seemed like that is where God has been working at. At least it seems like they (former Amish) are more open to hear the truth about the gospel. We are thankful for all the Amish students we are reaching through the Sonlight Club. We leave for Wisconsin tomorrow morning for several days to meet with two Amish families that are searching for truth.

Churches and MAP Presentations

During 2003 we had the privilege of ministering/presenting MAP to (49) churches and special meetings. During this time we met so many people who have sold out to God. Esther herself was invited to speak at 7 ladies groups during the year.

Some testimonies from our Sonlight Club students

Sharon Miller (Age 8) Bloomfield, IA...*Mailman, Mailman, run and puff. The Sonlight Club has waited long enough.*

Steven Miller (Age 15) from Burton, OH...*I believe the Lord Jesus came into my heart, but I do not know if I am saved. Please write to me how I can really feel, or what I have to feel. I know that I am saved. Please pray for me and "thank you" for all the things that you have already taught me. Thank you from the bottom of my heart.*

Regina Coblentz (Age 25) from Free Union, VA...*The Lord has come to live in my heart...It's such a joy to know Him living in me. The Lord is so good! It's a real good feeling to have. I also do not want to live a life like I had but I want to tell others how I got saved.*

Susan Miller (Age 12) from Middlefield, OH...*Hi, just a little note to let you know more about this man. He is afraid of the dark or even to stay at home alone. I was wondering if this (Sonlight Club) would help. And it might even stop his drinking. Also, he is my uncle.*

Running the race with you...Joe, Esther, Jonathan, & Rachel Keim

M.A.P. Advisory/Support Team

Joe Keim (President)
John Bouquet, Pastor (Vice President)
Carol Gess (Secretary)
Sam Gray (Treasurer)

Randall Collins, Pastor
Harvey & Mary Lou Yoder
Jerry Gess
Esther Keim

David & Teresa Yoder
William Keim